


HYBALANS⁺ OVAL


FLEXIBLE PLASTIC DUCTING, AIR SUPPLY, BLUE (ANTI BACTERIAL & ANTI STATIC)

This duct is supplied in roll lengths of 20 meters. The outside is made of corrugated HDPE and the inside is made of smooth LDPE.

H x W (mm) External	Article number	
52 x 132	40 048 04 35	


FLEXIBLE PLASTIC DUCTING, AIR EXTRACTION, RED

This duct is supplied in roll lengths of 20 meters. The outside is made of corrugated HDPE and the inside is made of smooth LDPE.

H x W (mm) External	Article number	
52 x 132	40 048 04 36	


AIR DISTRIBUTION BOX, LOWER PART

The lower part of the air distribution box is fitted with a restriction table and must be combined with the air distribution box upper part.

Dimensions L x W x H (mm)	Max. outflow (m ³ /h)	Connections	Article number	
600 x 210 x 271	350	14	40 048 04 34	


AIR DISTRIBUTION BOX XL, LOWER PART

The lower part of the air distribution box is fitted with a restriction table and must be combined with the air distribution box upper part.

Dimensions L x W x H (mm)	Max. outflow (m ³ /h)	Connections	Article number	
600 x 210 x 420	350	18	40 048 04 49	

AIR DISTRIBUTION BOX, UPPER PART

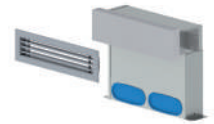
The upper part of the air distribution box is fitted with a pressure plate and must be combined with the air distribution box lower part. The main connection is suitable for 150 and 180 mm EPP ducting or 180 mm metal ducting. The upper part is made of EPP.

Dimensions L x W x H (mm)	Max. outflow (m ³ /h)	Article number	
603 x 207 x 233	350	40 047 04 24	

WALL-MOUNTED PLENUM FOR AIR SUPPLY AND EXTRACTION

Height-adjustable plenum with 2 connection ports. The plenum is supplied unpainted. Grille included.

Dimensions L x W x H (mm)	Max. outflow (m ³ /h)	Connections	Article number
310 x 71 x 264 - 344	100	2	40 048 04 46

**FLOOR-MOUNTED PLENUM FOR AIR SUPPLY AND EXTRACTION**

Floor plenum with 2 connections, can be shortened. Upper part: plastic. Lower part: unpainted metal. Grille included.

Dimensions L x W x H (mm)	Max. outflow (m ³ /h)	Connections	Article number
327 x 80 x 310	100	2	40 048 04 45

**CONNECTION BEND, 90° VERTICAL**

The bend is fitted with snap connectors and two sealing rings.

Application	Article number
Creating a 90° connection between two ducts	40 048 04 39

**CONNECTION BEND, 90° HORIZONTAL**

The bend is fitted with snap connectors and two sealing rings.

Application	Article number
Creating a 90° connection between two ducts	40 048 04 38

**RESTRICTION RING**

Calculate the required opening using the calculation software at burgerhout.com.

Application	Article number
Fits into connection piece	40 048 04 47



HYBALANS⁺ OVAL

AIR VALVE CONNECTION BEND 90°

The valve connection piece is fitted with snap connectors and a fully adjustable mounting base and is supplied with dust cap and sealing ring.

Duct Ø (mm)	Air valve size Ø (mm)		Floor/wall thickness (mm)	Article number
	Internal	External		
52 x 132	125	133	265	40 048 04 42



CONNECTION PIECE

The connection piece is fitted with snap connectors and supplied with gasket and sealing ring

Application	Article number
To connect duct to air distribution box	40 048 04 37



COUPLING PIECE

The coupling piece is fitted with snap connectors and supplied with two sealing rings.

Application	Article number
To extend duct	40 048 04 40



COUPLING PIECE OVAL TO ROUND

To connect oval duct with round duct; the keyed connection can be combined with the connecting piece and the coupling piece.

Application	Article number
Transition from round to oval with keyed connection	40 048 04 44
Transition from round Ø 75 to oval with click coupling	40 048 06 15
Transition from round Ø 92 to oval with click coupling	40 048 06 14



BEND 90° OVAL TO ROUND

Coupling oval duct with round duct using a click coupling.

Application	Article number
Bend from round Ø 75 to oval with click coupling	40 048 06 18
Bend from round Ø 92 to oval with click coupling	40 048 06 19



SEALING RING OVAL

Application	Article number
Spare sealing ring for ducts	40 047 04 29



DUST CAP

The dust cap prevents fouling of ducting during the construction process and the various ducts can be labelled with it.

Application	Article number
Capping duct ends	40 048 04 48

