



# VENTILATION SOLUTIONS

CATALOGUE VERSION 1

INNOVATIVE  
**PARTNER**



**Burgerhout®**

a brand of M&G Group

#### FLEXIBLE PLASTIC HOSE, AIR SUPPLY/EXTRACTION, WHITE (ANTI BACTERIAL & ANTI STATIC)

This hose is supplied in 50 meter rolls. The outside is made of HDPE and the inside is made of smooth MDPE.

Article Number	Gross Price	Ø external (mm)	Ø internal (mm)	Bend (mm)
HBFX 01 D75	€ 204,00	75	63	270
HBFX 01 D90	€ 292,00	90	76	330



#### PLENUM UNIVERSAL, AIR SUPPLY/EXTRACTION THROUGH WALL

This plenum is supplied with: a pair of brackets, fastening with nuts and bolts, four closing caps, a universal connector for diameters 75,90 and a protective cover.

Article Number	Gross Price	Dimensions L x W X H (mm)	Max out-flow (m³/h)
HBPU 01	€ 66,63	90 x 256 x 106	60*



\*Max flow rate using the plenum with two connected ducts.

#### PLENUM UNIVERSAL CONNECTOR

The connector is supplied with snap connectors, without sealing rings, for attaching the hose. It also has a three-position manual adjustment damper gaskets.

Article Number	Gross Price	Dimensions Ø x H (mm)	Ø (mm)
HBCU 01	€ 11,33	96 x 84	75 - 90



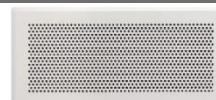
#### BASIC GRILLE FOR UNIVERSAL PLENUM

Article Number	Gross Price	Dimensions L x H (mm)	Min out-flow (m³/h)	Max out-flow (m³/h)
HBGB 01	€ 68,96	280 x 130	15	60



#### CLASSIC GRILLE FOR UNIVERSAL PLENUM

Article Number	Gross Price	Dimensions L x H (mm)	Min out-flow (m³/h)	Max out-flow (m³/h)
HBGC 01	€ 96,35	280 x 130	10	60



#### ELEGANCE GRILLE FOR UNIVERSAL PLENUM

Article Number	Gross Price	Dimensions L x H (mm)	Min out-flow (m³/h)	Max out-flow (m³/h)
HBGE 01	€ 105,66	280 x 130	15	60



# VENTILATION SOLUTIONS

CATALOGUE VERSION 1

INNOVATIVE  
**PARTNER**



**Burgerhout®**

— a brand of M&G Group —



# INDEX

## PREFACE

4

## VENTILATION TERMINALS

Ventilation Roof and Wall Terminal	8
Insulated Ventilation Roof Terminal	14

## INSULATED DUCTING

EasyAir EPS	20
EasyAir EPP	22
EasyAir EPP*	24
Heat Pump Set	26
EasyAir Silencers	27

## AIR DISTRIBUTION SYSTEM

General	
Hybalans* round	36
Hybalans* oval	42
Valves	46
Other plenums and air distribution boxes	48

## DESIGN TOOLS

Calculator	52
Burgerhout videos	53
Data sheets	53
BIM	54
Installation examples	55

## PREFACE

### BURGERHOUT – AN M&G GROUP BRAND

With a history dating back to 1865, we produce and supply climate control solutions for any dwelling that incorporates a duct in the floor, wall or roof. Our company provides innovative products that enable climate installations and systems to operate, and we collaborate with companies that produce HVAC equipment. With products from our well-established brands Burgerhout, Anjo and Stabile, we provide installers with full-service solutions that ensure a comfortable indoor climate, while avoiding any negative effects regarding the climate outdoors. Our mission is to create a “Sustainable and Comfortable Living Environment for Everyone.”

We operate locally by putting people and the environment first and attach a great deal of importance to respect, togetherness, safety & security and drive. With a resourceful team of 800 enthusiastic specialists, our own R&D and testing facilities, production sites in the Netherlands, Italy and Turkey and our own offices in Belgium, France, Italy, the United Kingdom and Germany, our products and services are available in over 25 countries.

### EXPERIENCE

The name Burgerhout has been a familiar and well-known name now for more than 150 years. We started out as a shipyard, but since the 1930s, have specialised in building products, with an emphasis on flue gas outlets, ventilation, and extraction systems. During the last few years, we have continually introduced additional solutions to support modern technologies such as heat pumps and solar systems (cable entries).



### MAKING THE GREEN CONNECTION WITH BURGERHOUT

The solutions we supply under the Burgerhout brand focus primarily on the combination of current conventional heating or ventilation systems and ‘green’, ‘energy-saving’ technologies. We are therefore the link that connects the outdoor climate with a comfortable indoor climate, while ensuring circularity and sustainability.

Systems and products that are already suitable for the realisation of a ‘green connection’ include EasySafe, FX Easy and the Delta-Discovery Air. This means that our approach is to take a more holistic view of the market, so that you can consider (hybrid) solutions such as the following:

- Combining an existing central heating boiler with a heat pump
- Combining a heat recovery ventilation (HRV) system with a heat pump
- Heat pumps (for hot water, ventilation, heating)
- Gas blends such as hydrogen-enriched natural gas
- Green gases (types of biogases) and synthetic gases





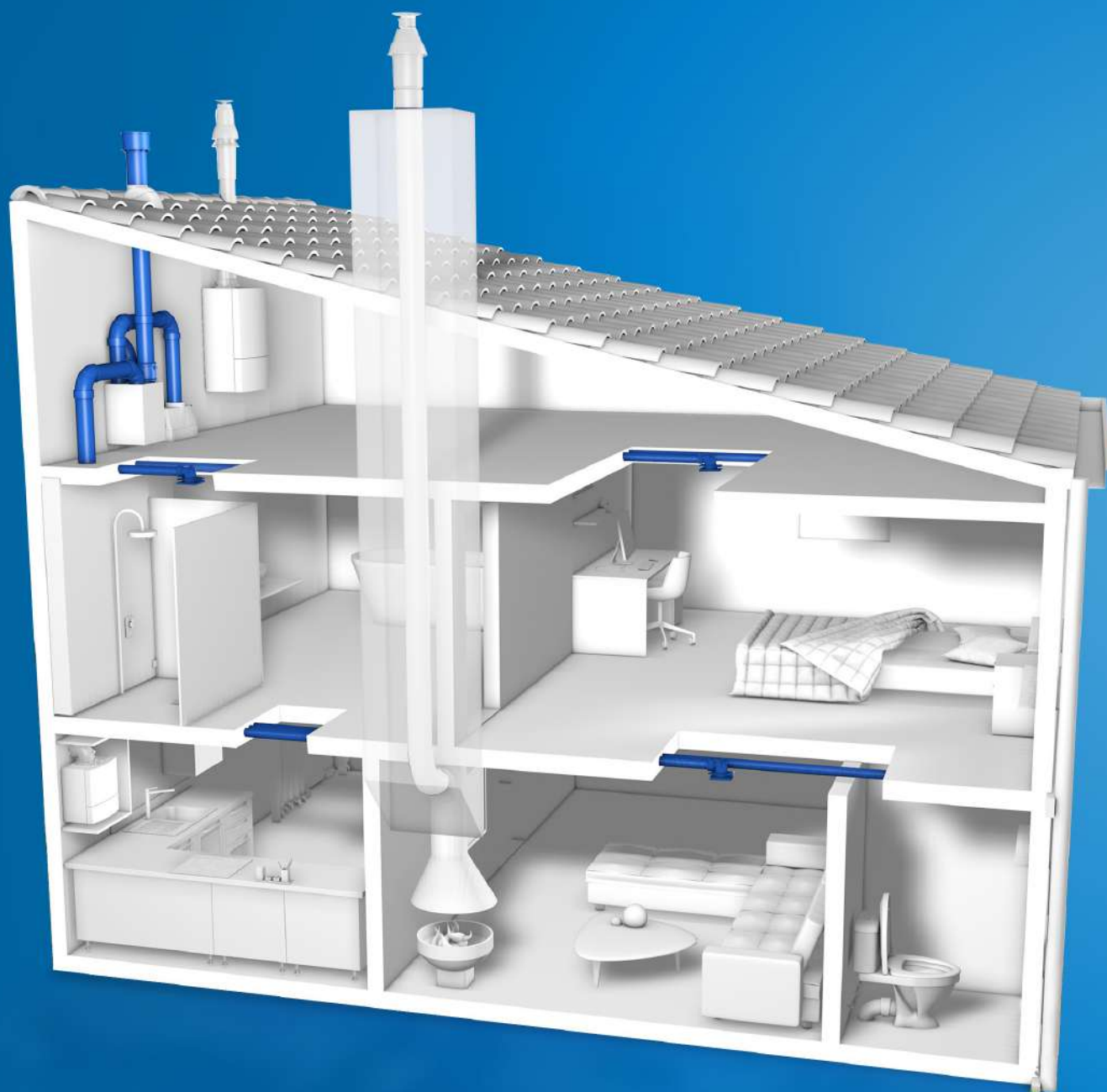
## INNOVATION AND OUR NEW PRODUCTION FACILITY

We are constantly innovating in pursuit of our objective to play our part in creating a better future for us all. So that we can continue doing this in the future, we will be opening our new production facility in Assen in 2023. This new factory will allow us to produce our systems even more efficiently and in an even more sustainable way than before. It will also allow us to continue our quest to develop an even better living environment for everyone by creating future-oriented products.

## GOT ANY QUESTIONS OR NEED ANY ADVICE?

You can contact us online for answers to any questions about our products and systems. We also offer a range of (software) tools to perform calculations. You can also consult our datasheets and manuals, which are available via our website ([burgerhout.com](https://burgerhout.com)). Do you have any other questions, or do you need training or advice? If so, do not hesitate to contact our experts by email at: [sales.support@mg-group.com](mailto:sales.support@mg-group.com)







# VENTILATION TERMINALS

ROOF AND WALL TERMINAL

INSULATED ROOF TERMINAL



**Burgerhout®**

a brand of M&G Group

ROOF TERMINAL

ROOF TERMINAL PP

Ø (mm)	Colour	Article number
100	Black	40 045 30 92
100	Terracotta	40 045 30 93



SOIL VENT PP

Ø (mm)	Colour	Article number
110	Black	40 045 30 90
110	Terracotta	40 045 30 91



MEGAVENT ROOF TERMINAL PP

For natural or mechanical ventilation

Ø (mm)	Colour	Article number
125	Black	40 045 31 02
125	Terracotta	40 045 31 05



ROOF TERMINAL PP

For mechanical ventilation

Ø (mm)	Colour	Article number
150	Black	40 045 31 18



**DOUBLE-WALLED ALUMINIUM ROOF TERMINAL BLACK**

Ø (mm)	L (mm)	Article number
100	1000	40 045 26 66
110	1000	40 045 26 67
125	1000	40 045 26 70
150	1000	40 045 26 73
180	1000	40 045 26 75
200	1000	40 045 26 78

**SINGLE-WALLED GALVANISED ROOF TERMINAL BLACK**

Ø (mm)	L (mm)	Article number
250	1160	40 045 26 81
300	1160	40 045 26 84
350	1180	40 045 26 87
400	1190	40 045 26 90

\*Suitable roof flashing (lead) available on request.

**ROOF BOARDING BRACKETS**

Ø (mm)	Colour	To suit Ø (mm)	Article number
101	Blank	100	40 045 34 05
111	Blank	110	40 045 34 11
126	Blank	125	40 045 34 17
151	Blank	150	40 045 34 26
181	Blank	180	40 045 34 32
201	Blank	200	40 045 34 38
251	Blank	250	40 045 34 44
301	Blank	300	40 045 34 50
351	Blank	350	40 045 34 56



WALL TERMINAL

WALL TERMINAL			
Ø (mm)	Colour	Article number	
125	Black	40 048 06 02	
125	White	40 048 06 03	
125	Terracotta	40 048 06 04	
125	Blank Aluminium	40 048 06 05	
150	Black	40 045 27 20	
150	White	40 045 27 24	
150	Terracotta	40 045 27 22	
150	Blank Aluminium	40 045 27 26	
160	Black	40 048 06 06	
160	White	40 048 06 07	
160	Terracotta	40 048 06 08	
160	Blank Aluminium	40 048 06 09	
180	Black	40 045 27 21	
180	White	40 045 27 25	
180	Terracotta	40 045 27 23	
180	Blank Aluminium	40 045 27 27	
200	Black	40 048 06 20	
200	White	40 048 06 21	
200	Terracotta	40 048 06 22	
200	Blank Aluminium	40 048 06 23	

## ROOF PLATES

### AIRTIGHT ROOF/SEALING PLATE PLASTIC (WHITE)

Ø (mm)	Roof Angle	To suit Ø (mm)	Article number
94 - 125	20° - 45°	100, 110, 125	40 045 34 63



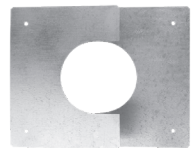
### AIRTIGHT ROOF/SEALING PLATE METAL (WHITE)

Ø (mm)	Roof Angle	To suit Ø (mm)	Article number
94 - 125	0° - 30°	100, 110, 125	40 045 34 65
94 - 125	30° - 60°	100, 110, 125	40 045 34 66
125 - 180	0° - 30°	125, 150, 180	40 045 34 67
125 - 180	30° - 60°	125, 150, 180	40 045 34 68
180 - 235	0° - 30°	180, 200	40 045 34 69
180 - 235	30° - 60°	180, 200	40 045 34 70
235 - 302	0° - 30°	250, 300	40 045 34 71
235 - 302	30° - 60°	250, 300	40 045 34 72



### METAL FINISHING PLATE (GALVANISED)

Ø (mm)	Colour	To suit Ø (mm)	Article number
102	White	100	40 045 35 05
112	Blank	110	40 045 35 07
126	White	125	40 045 35 11
152	Blank	150	40 045 35 19
152	White	150	40 045 35 20
182	Blank	180	40 045 35 34
202	Blank	200	40 045 35 28
252	Blank	250	40 045 35 37
302	Blank	300	40 045 35 43



# ROOF FLASHING



## FX EASY PITCHED ROOF FLASHING (LEADAX) + HINGED COLLAR

Type	Colour	Roof Angle	To suit Ø (mm)	Article number
FX120	Black	15° - 60°	100	40 047 20 04
FX120	Terracotta	15° - 60°	100	40 047 20 05
FX128-132	Black	15° - 60°	110	40 047 20 11
FX128-132	Terracotta	15° - 60°	110	40 047 20 12
FX140	Black	15° - 60°	125	40 047 20 07
FX140	Terracotta	15° - 60°	125	40 047 20 08
FX170	Black	15° - 60°	150	40 047 20 13
FX170	Terracotta	15° - 60°	150	40 047 20 14



## DX PITCHED ROOF FLASHING (LEADAX) + HINGED COLLAR

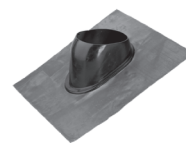
Type	Colour	Roof Angle	To suit Ø (mm)	Article number
DX205	Black	25° - 55°	180	40 045 40 32
DX205	Terracotta	25° - 55°	180	40 045 40 33
DX210	Black	25° - 55°	200	40 045 40 34
DX210	Terracotta	25° - 55°	200	40 045 40 35





**PITCHED ROOF FLASHING MODEL F (LEAD)**

Colour	Dimensions (mm)	Article number
Basic	500 x 500	40 045 35 47
Black	500 x 500	40 045 35 46
Terracotta	500 x 500	40 045 35 45

**HINGED COLLAR MODEL F**

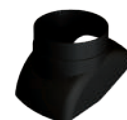
Type	Colour	Roof Angle	To suit Ø (mm)	Article number
F120	Black	25° - 45°	100	40 045 37 08
F120	Terracotta	25° - 45°	100	40 045 37 09
F128-132	Black	25° - 45°	110	40 045 37 14
F128-132	Terracotta	25° - 45°	110	40 045 37 13
F140	Black	25° - 45°	125	40 045 37 17
F140	Terracotta	25° - 45°	125	40 045 37 20
F170	Black	25° - 45°	150	40 045 37 32

**PITCHED ROOF FLASHING MODEL D (LEAD)**

Colour	Dimensions (mm)	Article number
Basic	800 x 1000	40 045 40 40

**HINGED COLLAR MODEL D**

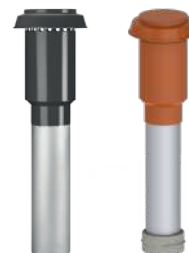
Type	Colour	Roof Angle	To suit Ø (mm)	Article number
D205	Black	25° - 55°	180	40 045 37 42
D210	Black	25° - 55°	200	40 045 37 47



## INSULATED ROOF TERMINALS

### ROOF TERMINAL ALUMINIUM WITH EPS INSULATION

Ø Inside (mm)	Colour	Length (mm)	Article number
125	Black	1000	40 048 04 51
125	Terracotta	1000	40 048 04 53
130	Black	1000	40 045 27 10
150	Black	1000	40 045 27 12
150	Black	1750	40 045 27 18
150	Terracotta	1000	40 045 27 14
160	Black	1000	40 048 06 00
160	Terracotta	1000	40 048 06 01
180	Black	1000	40 045 27 36
180	Black	1675	40 045 27 38
180	Terracotta	1000	40 045 27 37



### ROOF BOARDING BRACKET

Ø (mm)	Colour	To suit Ø (mm)	Article number
151	Blank	125, 130	40 045 34 26
181	Blank	150	40 045 34 32
201	Blank	160, 180	40 045 34 38



### AIRTIGHT ROOF/SEALING PLATE METAL (WHITE)

Ø (mm)	Roof Angle	Article number
125, 150	0° - 30°	40 045 34 67
125, 150	30° - 60°	40 045 34 68
150, 160, 180	0° - 30°	40 045 34 69
150, 160, 180	30° - 60°	40 045 34 70



### ALUMINIUM FLASHING PLATE

Ø (mm)	To suit Ø (mm)	Article number
160	125, 130	40 045 31 82
204	150, 160, 180	40 045 32 10



**FX EASY PITCHED ROOF FLASHING (LEADAX) + HINGED COLLAR**

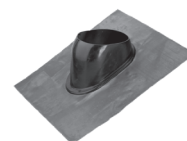
Type	Colour	Roof angle	To suit Ø (mm)	Article number
FX160	Black	15° - 60°	125, 130	40 047 20 15
FX160	Terracotta	15° - 60°	125, 130	40 047 20 16

**DX PITCHED ROOF FLASHING (LEADAX) + HINGED COLLAR**

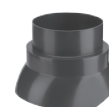
Type	Colour	Roof angle	To suit Ø (mm)	Article number
DX205	Black	25° - 55°	150	40 045 40 32
DX205	Terracotta	25° - 55°	150	40 045 40 33
DX210	Black	25° - 55°	160, 180	40 045 40 34
DX210	Terracotta	25° - 55°	160, 180	40 045 40 35

**PITCHED ROOF FLASHING MODEL F (LEAD)**

Colour	Dimensions (mm)	Article number
Lead	500 x 500	40 045 35 47
Completely black	500 x 500	40 045 35 46

**HINGED COLLAR MODEL F**

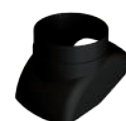
Type	Colour	Roof angle	To suit Ø (mm)	Article number
F160	Black	25° - 45°	125, 130	40 045 37 26

**PITCHED ROOF FLASHING MODEL D (LEAD)**

Colour	Dimensions (mm)	Article number
Lead	800 x 1000	40 045 40 40

**HINGED COLLAR MODEL D**

Type	Colour	Roof angle	To suit Ø (mm)	Article number
D205	Black	25° - 55°	150	40 045 37 42
D205	Terracotta	25° - 55°	150	40 045 37 46
D210	Black	25° - 55°	160, 180	40 045 37 47







# INSULATED DUCTING

EASYAIR EPS

EASYAIR EPP

EASYAIR EPP<sup>+</sup>

EASYAIR SOUND DAMPERS



**Burgerhout®**

a brand of M&G Group

## EASYAIR INSULATED DUCTING

All component parts of an air distribution system influence the overall performance and efficiency of the installation. None more so, than the ducting chosen to transport the supply and extracted air from the ventilation unit to the air distribution box and the home. In addition, it is important to properly move the air from outside the house to the ventilation unit.

For this, it is important to consider the ventilation requirement and determine the air volumes that must be displaced per hour. Next, the options for installing a vent to the outside of the home for air supply or extraction must be considered, making sure that the fresh air is not mixed with the waste air from the home. The dilution factor as stated in the construction legislation must be taken into account.

Once the air volume has been determined, the diameter of the insulated ducts can be selected. Often, this diameter is the same as that of the ventilation unit, but larger ducts can be deliberately chosen to reduce resistance. Insulated ducts are chosen to minimize condensation and heat loss which can occur due to temperature and humidity differences between the fresh supply of outside air and the waste indoor air.

Burgerhout supplies a comprehensive range of cleverly designed insulated ducting systems. These easily installed systems avoid thermal bridges ensuring a comfortable living environment for the residents. A perfect solution can be found for individual homes and larger plant rooms.

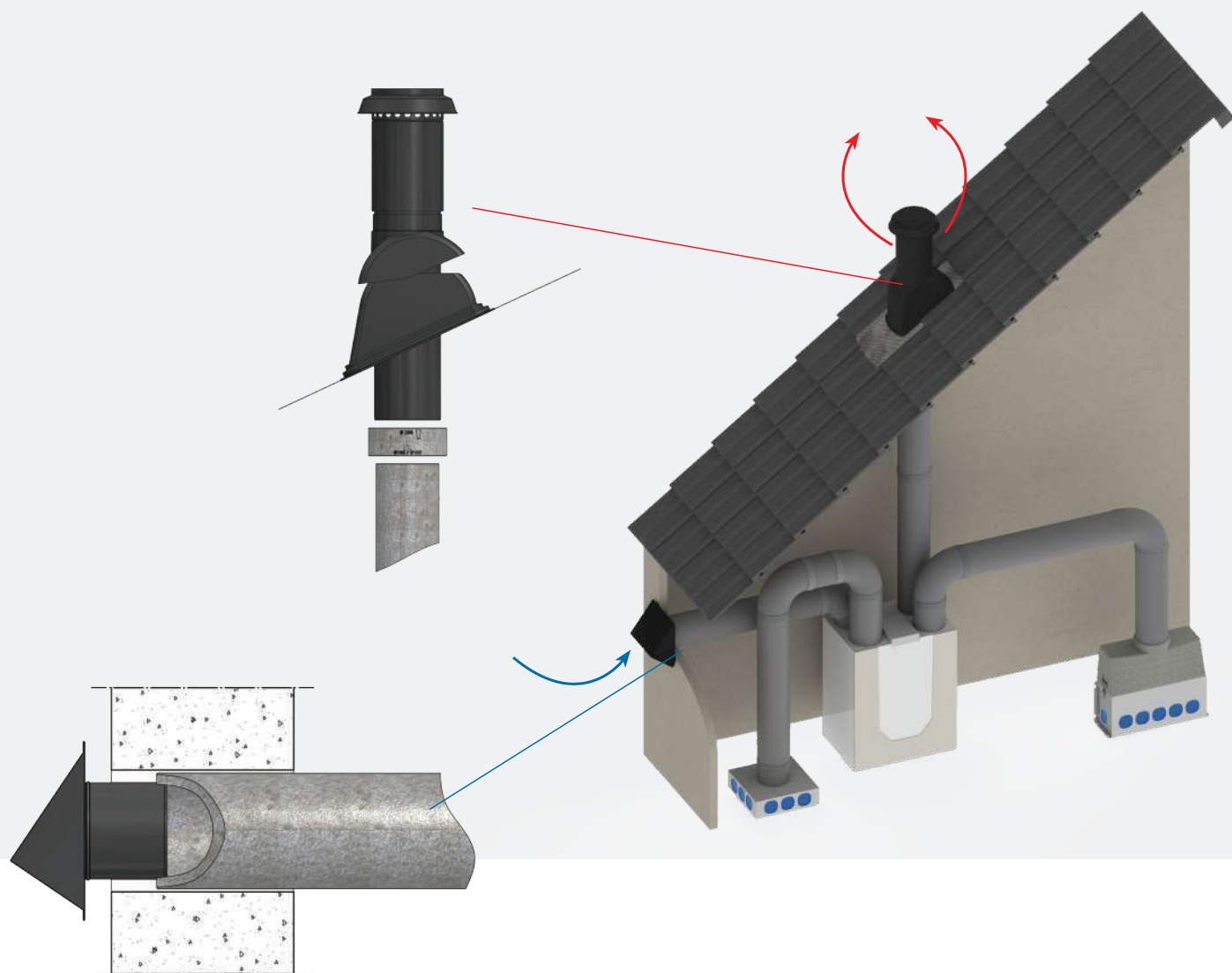
The range of connection materials consists of 3 types of ducting: EPP ducting, thick-walled EPP+ ducting and EPS ducting. Each has their own characteristic properties and applications. For maximum ease of installation in any project, opt for insulated EPP ducts in diameters 125, 150, 160 and 180 mm.

If you want extra light ducts with a high insulation value, then choose the insulated EPS ducts with a diameter of 125 and 160 mm. These can be easily applied with the PP connection pieces and can be used with all types of vents.

If the project requires a higher insulation value for less heat loss and a lower risk of condensation in colder climates, choose the insulated thick-walled EPP+ ducts with diameters 160 and 200 mm. The thick walls provide greater noise and thermal insulation.







# EASYAIR EPS INSULATED VENTILATION DUCTING

The new range of insulated ducts is suitable for the supply and exhaust of ventilation air in homes and small public utility buildings. The products are suitable for use inside the home. Made from high-grade insulation material, these products deliver impressive thermal performance. The material is lightweight, is easy to cut and fits standard wall and roof terminals. The smart couplers guarantee an airtight connection and ensure that ducts can be mounted close together or directly against the wall while retaining their high insulation value. The smart construction and high insulation value prevent condensation in the pipes and minimise energy loss.

- High insulation value
- Fire resistance class E
- Air tightness class D
- Compact installation
- Lightweight and easy to cut



## PIPE, INCLUDING SLEEVE JOINT

Ø (mm)	Length (mm)	Article number
125	500	40 048 05 51
125	1000	40 048 05 50
160	500	40 048 05 61
160	1000	40 048 05 60



## 90° BEND, INCLUDING SLEEVE JOINT

Ø (mm)	Article number
125	40 048 05 53
160	40 048 05 63



## 45° BEND, INCLUDING SLEEVE JOINT

Ø (mm)	Article number
125	40 048 05 52
160	40 048 05 62



**SLEEVE JOINT**

Ø (mm)	Article number
125	40 048 05 54
160	40 048 05 64

**INSULATED REDUCER**

Ø (mm)	Article number
150 - 160	40 048 05 69

**UNIVERSAL VENTILATION DUCTING BRACKET**

Ø (mm)	Article number
125, 160	40 047 04 59

**AIRTIGHT ROOF/SEALING PLATE METAL (WHITE)**

To suit Ø (mm)	Roof Angle	Article number
125	0 - 30°	40 045 34 67
125	30 - 60°	40 045 34 68
160	0 - 30°	40 045 34 69
160	30 - 60°	40 045 34 70



EASYAIR EPP INSULATED VENTILATION DUCTING

Insulated ventilation ducting made entirely of EPP. The right-angle bend is cleverly designed and can be split into two 45° bends quickly and easily by cutting along the marked line. Just add a separate sleeve joint to the cut ends and both are ready to use.

Sleeve joints offer many advantages:

- No thermal bridge thanks to excellent insulating value
- Easy to assemble thanks to rounded off edges
- Corrugated inside surface to ensure optimal connection
- Also available in thick-walled version



PIPE, INCLUDING SLEEVE JOINT

Ø (mm)	Length (mm)	Article number	Ø (mm)	Length (mm)	Article number
125	500	40 048 04 80	160	500	40 048 04 90
150	500	40 048 04 70	180	500	40 048 04 60
125	1000	40 048 04 82	160	1000	40 048 04 92
150	1000	40 048 04 72	180	1000	40 048 04 62



90° BEND, INCLUDING SLEEVE JOINT (EQUAL 2 X 45 BY USING SLEEVE JOINT)

Ø (mm)	Article number	Ø (mm)	Article number
125	40 048 04 84	160	40 048 04 94
150	40 048 04 74	180	40 048 04 64



45° BEND, INCLUDING SLEEVE JOINT

Ø (mm)	Article number	Ø (mm)	Article number
125	40 048 04 86	160	40 048 04 96
150	40 048 04 76	180	40 048 04 66



**SLEEVE JOINT**

Ø (mm)	Article number	Ø (mm)	Article number
125	40 048 04 88	160	40 048 04 98
150	40 048 04 78	180	40 048 04 68

**UNIVERSAL VENTILATION DUCTING BRACKET**

Ø (mm)	Article number
125, 150, 160, 180	40 047 04 59

**AIRTIGHT ROOF/SEALING PLATE METAL (WHITE)**

To suit Ø (mm)	Roof Angle	Article number
125, 150	0 - 30°	40 045 34 67
125, 150	30 - 60°	40 045 34 68
150, 160, 180	0 - 30°	40 045 34 69
150, 160, 180	30 - 60°	40 045 34 70

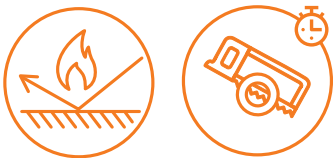


# EASYAIR EPP+ INSULATED VENTILATION DUCTING

## EASYAIR EPP+ THICK-WALLED INSULATED VENTILATION DUCTING

The EasyAir insulated ventilation duct package is also available in a thick-walled version, which gives the system an even better insulation value, with virtually no chance of condensation even in the most extreme cases.

The thick-walled EPP+ has a smooth outline due to a unique sleeved connection. Systems can be installed without the use of separate coupling pieces. When shortening pipe lengths a thick-walled sleeve jointing piece is available to reduce waste.



### THICK-WALLED PIPE, WITH INTEGRATED SLEEVE JOINT

Ø (mm)	Length (mm)	Article number
160	1000	40 048 04 20
200	1000	40 048 04 30



### THICK-WALLED 45° BEND, WITH INTEGRATED SLEEVE JOINT

Ø (mm)	Article number
160	40 048 04 21
200	40 048 04 31



### THICK-WALLED SLEEVE JOINT

Ø (mm)	Article number
160	40 048 04 22
200	40 048 04 32





**ECCENTRIC REDUCER**

Function (mm)	Reduction inside-outside Ø (mm)	Article number
150	150/160-180/246	40 048 04 23
160	160/160-190/246	40 048 04 24
200	180/200-210/286	40 048 04 33



**UNIVERSAL VENTILATION DUCTING BRACKET**

Ø (mm)	Article number
160, 200	40 047 05 91



**AIRTIGHT ROOF/SEALING PLATE METAL (WHITE)**

To suit Ø (mm)	Roof Angle	Article number
160, 200	0 - 30°	40 045 34 71
160, 200	30 - 60°	40 045 34 72



INSULATED DUCTING

HEAT PUMP SET

Burgerhout is expanding the product range of insulated ducts with a complete set for air-driven heat pumps. This set comprises of standard Burgerhout items and fits perfectly on all standard heat pumps on the market. For optimum condensation prevention, the set includes the new EPS pipes and bends, along with the new airtight roof plates to create a completely airtight building according to current regulations. The set is supplemented with our Burgerhout wall terminals.

Perfect solution for heat pump installations

The set forms the perfect solution for all your installation projects. All products come in a single box to make your job as easy as possible. No thermal bridge thanks to the newly designed connection combined with the smart construction.



HEAT PUMP SET

Application	Ø (mm)	Article number
Heat pump air to air	160	41 012 22 83

The set contains the following components:	Quantity
EPS pipe (including sleeve joint)160 mm, L= 1000 mm	2 pieces
Bend 90° (including sleeve joint)	2 pieces
Wall terminal 160 mm black	2 pieces
Airtight roof/sealing plate metal (white) 0 - 30°	2 pieces



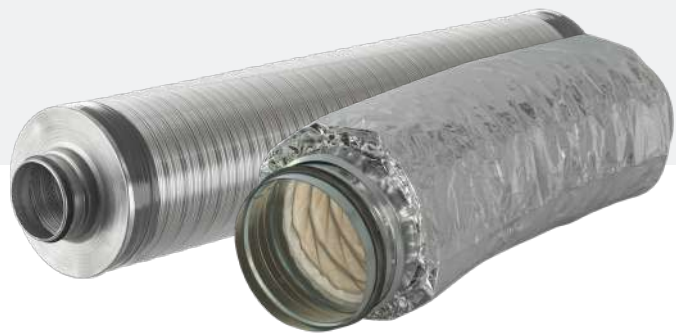
## EASYAIR SOUND DAMPERS

The latest additions to our product range are our EasyAir sound dampers. The majority of ventilation systems include noise-damping components to reduce noise nuisance produced by the system itself and by external factors to a minimum.

Noises of that type will be perceived as irritating if nothing is done to reduce them. When fitted inside ventilation ducts, EasyAir sound dampers reduce those noises to a minimum. If no noise damper is present, the noises can be transmitted via the ventilation ducts and can cause nuisance or annoyance in other rooms. Fitting sound dampers inside ventilation ducts therefore ensures that the acoustic requirements are met.

### The benefits of EasyAir sound dampers are as follows:

- High-quality products that fit perfectly within the EasyAir system and are guaranteed to be leak-free
- Pressure loss/resistance is included in the online Hybalans<sup>+</sup> calculation tool
- Flexible dampers and semi-rigid dampers are available, thereby providing the right solution for any project
- A complete range of 125, 160, 180 mm dampers are available
- For frequency-specific information about noise reduction, see the datasheets on [burgerhout.com](http://burgerhout.com)



### SOUND DAMPERS

Ø (mm)	Type	Length (mm)	Bend radius	Article number	
1	125	Flexible	1000	150	40 048 05 80
	160	Flexible	1000	185	40 048 05 81
	180	Flexible	1000	205	40 048 05 82
2	125	Semi-Flexible	1000	360	40 048 05 90
	160	Semi-Flexible	1000	400	40 048 05 91
	180	Semi-Flexible	1000	448	40 048 05 92







# AIR DISTRIBUTION SYSTEM

GENERAL

HYBALANS<sup>+</sup> ROUND

HYBALANS<sup>+</sup> OVAL

AIR VALVES

OTHER PLENUMS AND AIR DISTRIBUTION BOXES



**Burgerhout<sup>®</sup>**

a brand of M&G Group

## FLEXIBLE MODULAR SYSTEM

### A FLEXIBLE, MODULAR SYSTEM THAT CAN BE USED IN ANY TYPE OF PROJECT

As described earlier, a proper ventilation system is important in every home. This must be considered in the preparations for every new construction or renovation project. Burgerhout's Hybalans<sup>+</sup> is a revolutionary air distribution system that provides the solution to all ventilation issues. Air supply and extraction with Hybalans<sup>+</sup> offers many benefits. This smart modular system ensures a healthy indoor climate at all times. It is easy to design and install and results in a constantly high level of ventilation comfort. Hybalans<sup>+</sup> offers nothing but advantages for contractors, architects, consultants and installers.

#### Hybalans<sup>+</sup> can be applied in all sorts of projects:

- In combination with individual, collective and balanced ventilation systems.
- Renovation and new builds.
- Homes and small non-residential buildings.
- With flooring such as wide-slab, hollow-core slab and flooring cast in situ.

#### SYSTEM C: AIR EXTRACTION

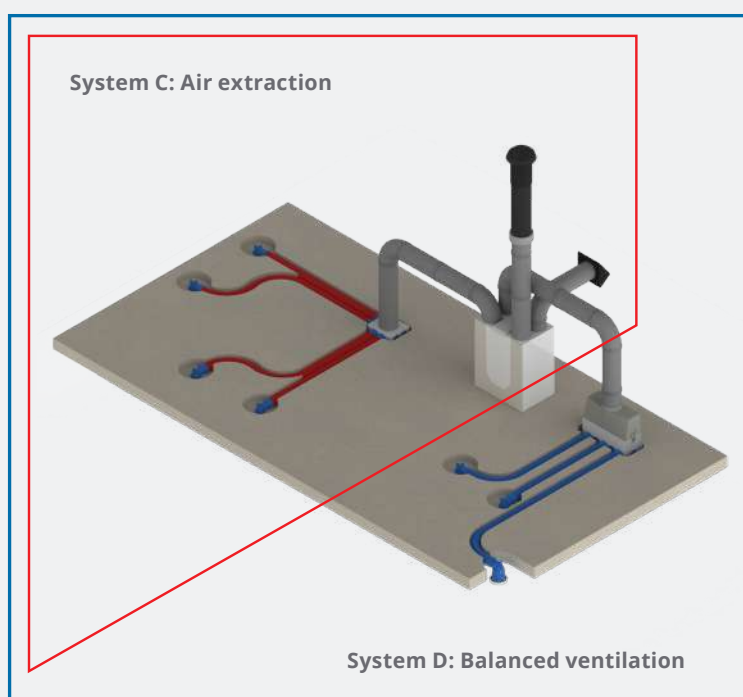
Natural supply and mechanical extraction of ventilation air

With a limited number of components, you can quickly create a flawlessly functioning air extraction system, or system C. This comprises an air distribution box and flexible hoses as well as all coupling pieces. The unprecedented simplicity saves time and prevents errors. In addition, the technology can be flexibly adapted to any changes to the building. Smooth connections make the system exceptionally quiet. Individual ducts for each room rule out the possibility of crosstalk. The perfect aerodynamic design guarantees energy-efficient ventilation and clean ducts with minimal maintenance.

#### SYSTEM D: BALANCED VENTILATION

Mechanical supply and extraction of ventilation air

As the name implies, Hybalans<sup>+</sup> is perfectly suited for balanced ventilation. Hybalans<sup>+</sup> has blue ducts for individual supply of fresh air and red ducts for individual extraction of stale air. The clear simplicity of the system guarantees quick and error-free installation. No tools or sealants needed thanks to the solid click connections. Just plug and play! The online Hybalans<sup>+</sup> calculator helps you determine the correct restriction ring. No settings readjustment is needed and disruptions cannot occur. See page 52 for more information on the Hybalans<sup>+</sup> calculator.



## FIVE UNIQUE ADVANTAGES



### 1. Maximum freedom of design and flexibility:

The relatively small number of parts allows for the design of the most diverse air distribution systems. Any changes to the building design or ventilation system layout can be implemented quickly, while maintaining quality.



### 4. Time savings:

No tools required thanks to the unique snap connection. All ducting is clearly identified for supply air and exhaust air. All components have an airtight seal, thus eliminating the need to tape the connections later or take other measures.



### 2. Optimum comfort:

The simplicity of the system guarantees perfectly regulated air distribution and a healthy indoor climate. The special inlet valves prevent any draughts. Also, once configured, the restriction rings settings cannot be tampered with, so that the system cannot accidentally switch off or start whistling.



### 5. Minimum cost of maintenance:

Due to the sophisticated design, the system prevents pressure loss or fouling. The system is also easy to clean, without the risk of disturbing adjustment settings, so there are no unexpected additional costs.



### 3. Energy-efficient and durable:

The system consists entirely of components that have been designed to have as little air resistance as possible. This allows air to circulate throughout the house without the fan having to use too much power.

## PLUG-AND-PLAY

### HYBALANS+ PROJECT APPROACH

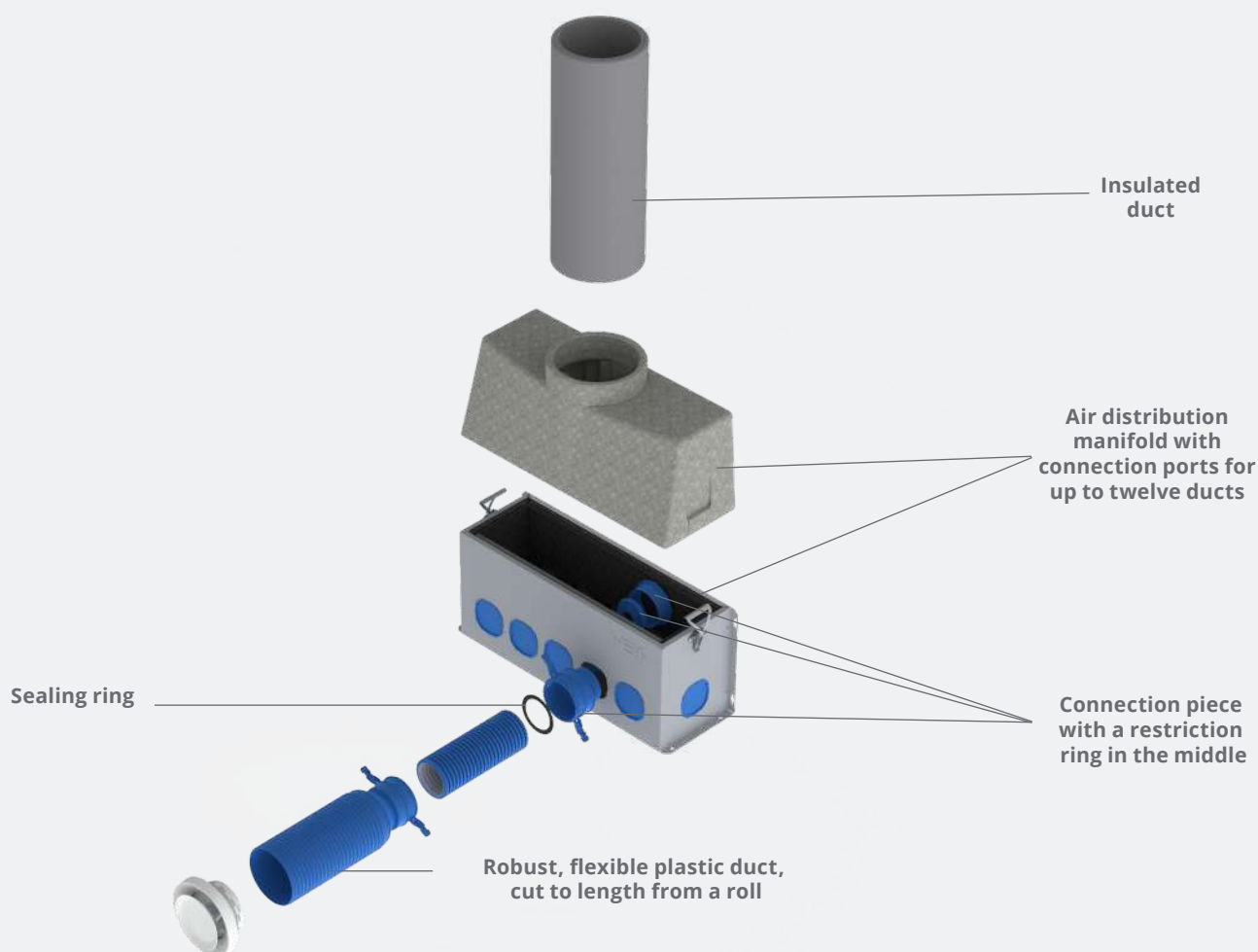
Hybalans+ is a clever plug-and-play system whose results are known beforehand. Hybalans+ is as simple as it is efficient: Each room has its own red duct for the extraction of stale air and, if desired, its own blue duct for the in-flow of fresh ventilation air. The flexible plastic ducting (sized accordingly) is connected up to an air distribution manifold which is, in turn, connected to the chosen ventilation system. When you start a new project, it is important that you first acquaint yourself with the ventilation requirements in your country. These will help you calculate the minimum air volumes for each room. This is the starting point for putting together an effective ventilation system. Next, you must determine the location of the ducts and vents in the home. These must take into account the air flows and the comfort of the end user. Once all wishes and requirements are known, you can select the components of the Hybalans+ system. When designing a ventilation system, you have a choice from 3 types of ducts with all required components, so there is always a duct that suits

your project. It is important to always keep comfort and proper performance of the system in mind, and where possible, keep the air speed as low as possible.

Once the air requirement and all associated components have been determined, it is possible to configure and balance the system. A restriction ring is clicked into the air distribution box providing the pre-determined air flow for each duct/room. The level of restriction can be quickly and easily calculated using the Hybalans+ calculator on [burgerhout.com](https://burgerhout.com). For more information, see page 52.

The air distribution system as a whole consists of various components, including the air distribution box, connection materials, flexible ducts and valve. It is important to use insulated ducts for supply and exhaust air and to design the most efficient ventilation system for the property.

**For more information on installation, go to the manual on [burgerhout.com](https://burgerhout.com).**





# THE BEST SOLUTIONS FOR ANY TYPE OF PROJECT

## THE SYSTEM IS AVAILABLE IN THREE VERSIONS

### Round system with Ø 92 mm ducting

For maximum freedom of design, the Hybalans+ system uses flexible ducts that all connect to the rooms individually. These double-skinned ducts have minimal air resistance and are easy to connect to the distribution boxes and other components. It is also possible to connect 2 ducts to 1 room to minimise air speed.



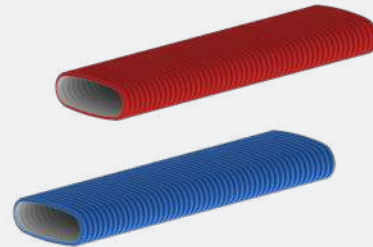
### Round system with Ø 75 mm ducting

Some situations require more flexibility. There is a smart interim solution for this: the tried-and-tested round Hybalans+ system, but with an extra small diameter. This comes with special components, such as a connection piece for two ducts on one valve. This allows system designers to achieve high flow rates per room when space is limited.

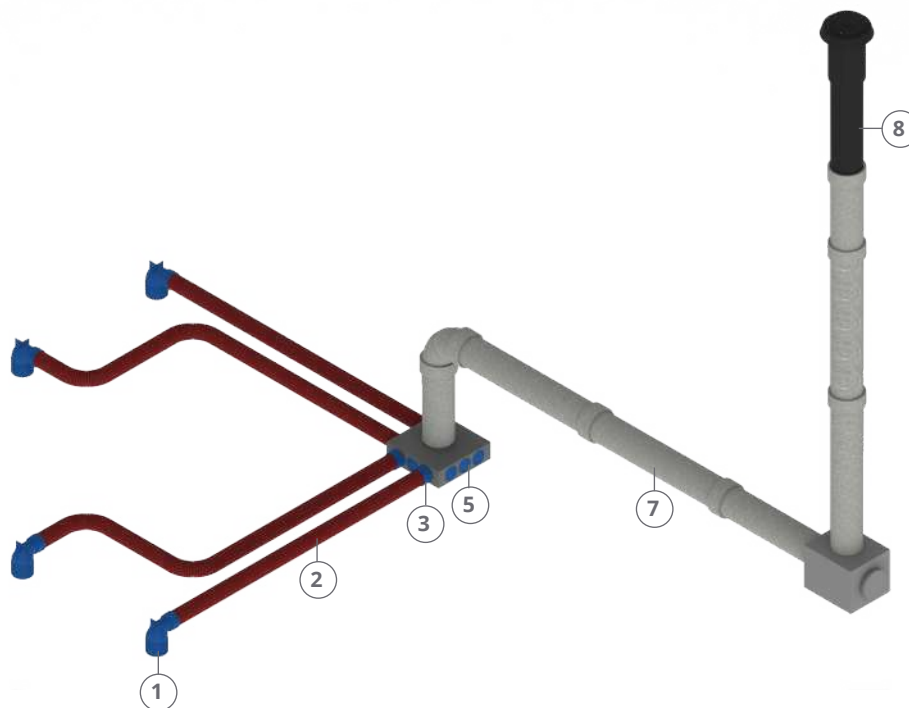











### Oval system with a ducting height of just 52 mm

The preferred option is round Hybalans+ ducting, but there are situations when a flatter solution is required. In such cases you will of course want to work with the trusted Hybalans+ brand and take advantage of its many benefits. For that reason, this entire system is also available in an oval version. The oval ducting is exceptionally flat: only 52 mm. The oval Hybalans+ system is suitable for mounting on or under floors and in cavity and stud walls. It is the ideal solution for screed floors, suspended ceilings and wall systems. The system can be mixed with round ducting for optimal design freedom.

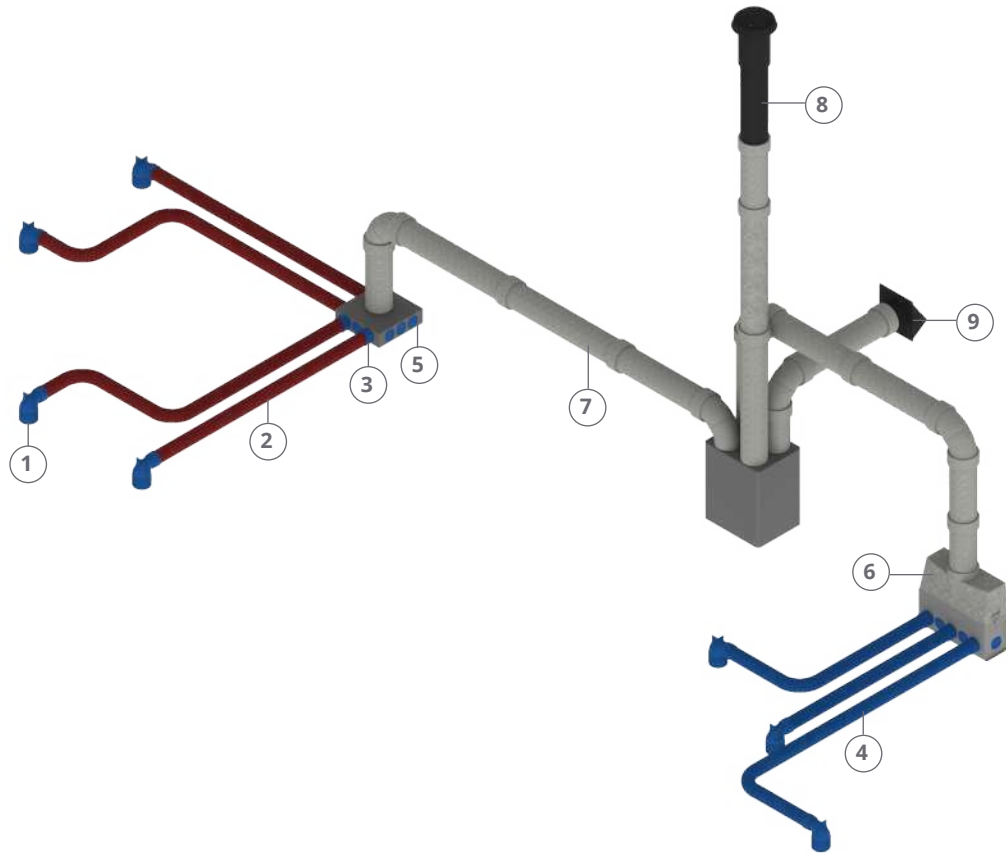


## HYBALANS<sup>+</sup> SYSTEM C - EXAMPLE

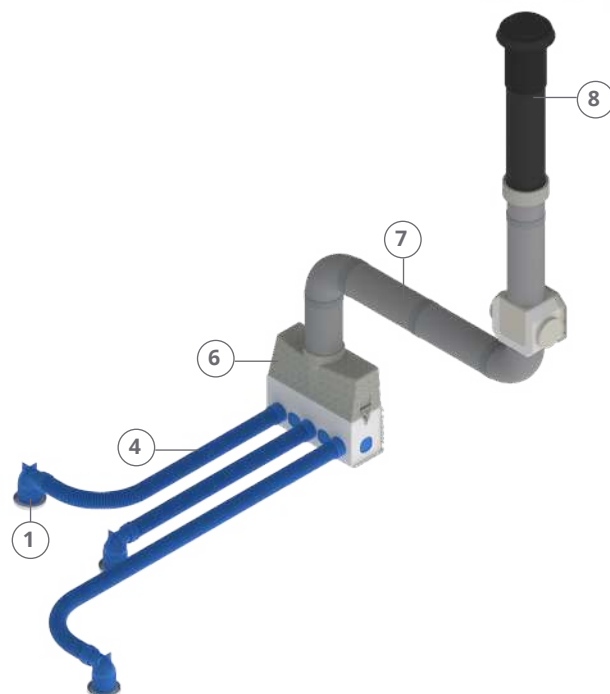


Nr	Description	
1		Air valve connection
2		Flexible plastic ducting, extraction, red
3		Connection with snap connectors and two sealing rings
4		Flexible plastic ducting, supply, blue
5		Air extraction plenum, square
6		Air distribution manifold
7		Insulated ventilation ducting
8		Ventilation Roof Terminal
9		Ventilation Wall Terminal

## HYBALANS<sup>+</sup> SYSTEM D - EXAMPLE



## HYBALANS<sup>+</sup> ONLY AIR SUPPLY - EXAMPLE



## HYBALANS<sup>+</sup> ROUND

### FLEXIBLE PLASTIC DUCTING, AIR SUPPLY, BLUE (ANTI BACTERIAL & ANTI STATIC)

This ducting is supplied in 50 meter rolls for Ø92, and in 40 meters for Ø75. The outside is made of corrugated HDPE and the inside is made of smooth LDPE.

Ø Outside (mm)	Ø Inside (mm)	Curve radius (mm)	Article number
92	78	150	40 047 04 00
75	63	125	40 047 03 50



### FLEXIBLE PLASTIC DUCTING, AIR EXTRACTION, RED

This ducting is supplied in 50 meter rolls for Ø92, and in 40 meters for Ø75. The outside is made of corrugated HDPE and the inside is made of smooth LDPE.

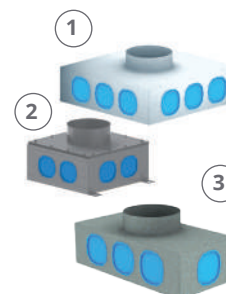
Ø Outside (mm)	Ø Inside (mm)	Curve radius (mm)	Article number
92	78	150	40 047 04 01
75	63	125	40 047 03 49



### AIR EXTRACTION PLENUM

The stale air extraction plenum has no internal noise damper and is supplied with a restriction data label and cap. The plenum is supplied unpainted.

Dimensions L x W x H (mm)	Max. out-flow (m³/h)	Main connection port (mm)	Number of connection ports	Article number
<b>1</b> 400 x 400 x 110	350	150	12	40 047 04 45
400 x 400 x 110	350	160	12	40 047 04 73
400 x 400 x 110	350	180	12	40 047 04 75
<b>2</b> 300 x 300 x 110	225	150	8	40 048 06 10
<b>3</b> 400 x 200 x 110	225	125	8	40 047 04 46



### AIR DISTRIBUTION MANIFOLD COMPLETE

The air distribution manifold has an internal noise damper and is supplied with a restriction data label. The lower part of the manifold is made of metal, the upper part is made of EPP. Connections on the front, side and bottom.

Dimensions L x W x H (mm)	Max. out-flow (m³/h)	Main connection port (mm)	Number of connection ports	Article number
603 x 207 x 504	350	150 /180	12	40 047 04 07



### AIR DISTRIBUTION MANIFOLD, UPPER PART

The air distribution manifold is fitted with a pressure plate and must be used in combination with the air distribution manifold lower part. The main connection is suitable for 150 mm and 180 mm. The upper part is made of EPP.

Dimensions L x W x H (mm)	Max. out-flow (m³/h)	Main connection port (mm)	Article number
603 x 207 x 233	350 / 450	150 /180	40 047 04 24



**AIR DISTRIBUTION MANIFOLD, LOWER PART**

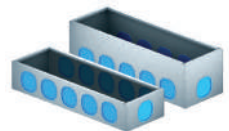
The lower part of the air distribution box must be combined with an upper part. The 350 m<sup>3</sup>/h is fitted with internal acoustic damping, the 450 m<sup>3</sup>/h version is not. The version with 17 connections also has connections at the back.

Dimensions L x W x H (mm)	Max. out-flow (m <sup>3</sup> /h)	Number of connection ports	Article number
603 x 207 x 271	350	12	40 047 04 23
603 x 207 x 271	450	17	40 047 04 22

**AIR SUPPLY AND/OR EXTRACTION PLENUM**

The plenum is supplied unpainted. Only for use in combination with right-angle/straight air distribution manifold.

Dimensions L x W x H (mm)	Max. out-flow (m <sup>3</sup> /h)	Number of connection ports	Article number
603 x 207 x 180	450	12	40 047 04 44
603 x 207 x 110	450	12	40 047 04 43

**AIR DISTRIBUTION MANIFOLD, RIGHT-ANGLE/STRAIGHT**

The air distribution manifold is supplied with a removable cap and an air distribution manifold intermediate part; it has rotating clip fittings and no internal noise damper. The main connection is suitable for 150 mm and 180 mm EPP ducting or 180 mm metal ducting. The lower part of the manifold is made of metal, the upper part is made of EPP.

Dimensions L x W x H (mm)	Max. out-flow (m <sup>3</sup> /h)	Article number
603 x 207 x 440	450	40 047 04 42

**WALL-MOUNTED PLENUM FOR AIR SUPPLY AND/OR EXTRACTION**

Height-adjustable plenum with 2 connection ports. The plenum is supplied unpainted. Grille included.

Dimensions L x W x H (mm)	Max. out-flow (m <sup>3</sup> /h)	Number of connection ports	Article number
310 x 262-342 x 71	100	2	40 047 04 92

**FLOOR-MOUNTED PLENUM FOR AIR SUPPLY AND/OR EXTRACTION**

Floor plenum (can be shortened to suit requirements), fitted with 2 connection ports. The plenum is supplied unpainted. Grille included.

Dimensions L x W x H (mm)	Max. out-flow (m <sup>3</sup> /h)	Number of connection ports	Article number
308 x 301 x 71	100	2	40 047 04 94



## HYBALANS+ ROUND

### CONNECTION PIECE

The connection piece is fitted with snap connectors, a connection for a restriction ring (not supplied) and has two sealing rings.

Application	Ø (mm)	Article number
Air distribution manifold or extraction plenum	92	40 047 04 08
Air distribution manifold or extraction plenum	75	40 047 03 52



### CONNECTION BEND, COMPLETE

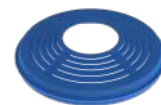
Application	Ø (mm)	Article number
Air distribution manifold or extraction plenum	92	40 047 04 54
Air distribution manifold or extraction plenum	75	40 047 04 58



### RESTRICTION RING

Calculate the correct opening with the aid of the calculator on [www.burgerhout.com](http://www.burgerhout.com).

Application	Article number
Fits into connection piece	40 047 04 09



### AIR VALVE CONNECTION, RIGHT-ANGLE

This connection piece is available with a choice of a single or double 75 or single 92 connections to a single air valve. Fitted with snap connectors. The connection piece has a fully adjustable mounting base. The connection piece is supplied with a dust cap and sealing ring(s).

Duct Ø (mm)	Air valve size Ø (mm)		Floor/wall thickness (mm)	Article number
	Internal	External		
92	125	133	265	40 048 06 16
2 x 92	125	133	265	40 047 04 19
2 x 75	125	133	275	40 047 03 66



**AIR VALVE CONNECTION, STRAIGHT**

This connection piece is available with a choice of a single or double 75 or single 92 connections to a single air valve. Fitted with snap connectors. The connection piece has a fully adjustable mounting base. The connection piece is supplied with a dust cap and sealing ring(s).

Duct Ø (mm)	Air valve size Ø (mm)		Floor/wall thickness (mm)	Article number
	Internal	External		
92	125	133	280	40 048 06 17
2 x 92	125	133	265	40 047 03 69
2 x 75	125	133	265	40 047 03 68

**90° BEND**

The bend is fitted with snap connectors and supplied with two sealing rings.

Application	Ø (mm)	Article number
90° Connecting two ducts	92	40 047 04 35
90° Connecting two ducts	75	40 047 04 51

**90° BEND WITH MOUNTING BASE**

The bend is fitted with snap connectors and supplied with two sealing rings.

Application	Ø (mm)	Article number
Floor mounting	92	40 047 04 36
Floor mounting	75	40 047 04 53

**CONNECTION STRAIGHT**

The connection piece is fitted with snap connectors and supplied with two sealing rings.

Application	Ø (mm)	Article number
Connecting two ducts	92	40 047 04 05
Connecting two ducts	75	40 047 03 51

**SCREW COUPLING**

The screw coupling is fitted with snap connectors and supplied with a sealing ring.

Application	Ø (mm)	Article number
To extend snap connectors	92	40 047 04 37



## HYBALANS<sup>+</sup> ROUND

### CROSS-OVER, RIGHT ANGLES

To allow a cross-over of two 92 mm Ø ducts.

Length (mm)	Article number
500	40 047 04 02



### CROSS-OVER, RIGHT ANGLES EXTENDED

To allow a cross-over of two 92 mm Ø ducts.

Length (mm)	Article number
750	40 047 04 03



### SEALING RING

Ø (mm)	Article number
1 92	40 047 04 29
2 75	40 048 04 50



### CLAMPING BRACKET

Galvanised metal clamping bracket with torque connection.

Application	Ø (mm)	Article number
For securing ducts	92	40 047 04 31
For securing ducts	75	40 047 03 59



### DUST CAP

Application	Ø (mm)	Article number
Capping duct ends	92	40 047 04 20
Capping duct ends	75	40 047 03 54
Capping valve connection piece 2x75	75	40 047 03 55



### VALVE EXTENSION PIECE

For use with ceiling collar.

Application	Extension (mm)	Application	Article number
For ceiling/floors thicker than 100 mm	40	125	40 047 04 13






[illegible]

## HYBALANS<sup>+</sup> OVAL

### FLEXIBLE PLASTIC DUCTING, AIR SUPPLY, BLUE (ANTI BACTERIAL & ANTI STATIC)

This duct is supplied in roll lengths of 20 meters. The outside is made of corrugated HDPE and the inside is made of smooth LDPE.


H x W (mm) External	Article number
52 x 132	40 048 04 35



### FLEXIBLE PLASTIC DUCTING, AIR EXTRACTION, RED

This duct is supplied in roll lengths of 20 meters. The outside is made of corrugated HDPE and the inside is made of smooth LDPE.


H x W (mm) External	Article number
52 x 132	40 048 04 36



### AIR DISTRIBUTION BOX, LOWER PART

The lower part of the air distribution box is fitted with a restriction table and must be combined with the air distribution box upper part.


Dimensions L x W x H (mm)	Max. outflow (m <sup>3</sup> /h)	Connections	Article number
600 x 210 x 271	350	14	40 048 04 34



### AIR DISTRIBUTION BOX XL, LOWER PART

The lower part of the air distribution box is fitted with a restriction table and must be combined with the air distribution box upper part.


Dimensions L x W x H (mm)	Max. outflow (m <sup>3</sup> /h)	Connections	Article number
600 x 210 x 420	350	18	40 048 04 49



### AIR DISTRIBUTION BOX, UPPER PART

The upper part of the air distribution box is fitted with a pressure plate and must be combined with the air distribution box lower part. The main connection is suitable for 150 and 180 mm EPP ducting or 180 mm metal ducting. The upper part is made of EPP.

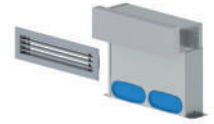
Dimensions L x W x H (mm)	Max. outflow (m <sup>3</sup> /h)	Article number
603 x 207 x 233	350	40 047 04 24



**WALL-MOUNTED PLENUM FOR AIR SUPPLY AND EXTRACTION**

Height-adjustable plenum with 2 connection ports. The plenum is supplied unpainted. Grille included.

Dimensions L x W x H (mm)	Max. outflow (m³/h)	Connections	Article number
310 x 71 x 264 - 344	100	2	40 048 04 46

**FLOOR-MOUNTED PLENUM FOR AIR SUPPLY AND EXTRACTION**

Floor plenum with 2 connections, can be shortened. Upper part: plastic. Lower part: unpainted metal. Grille included.

Dimensions L x W x H (mm)	Max. outflow (m³/h)	Connections	Article number
327 x 80 x 310	100	2	40 048 04 45

**CONNECTION BEND, 90° VERTICAL**

The bend is fitted with snap connectors and two sealing rings.

Application	Article number
Creating a 90° connection between two ducts	40 048 04 39

**CONNECTION BEND, 90° HORIZONTAL**

The bend is fitted with snap connectors and two sealing rings.

Application	Article number
Creating a 90° connection between two ducts	40 048 04 38

**RESTRICTION RING**

Calculate the required opening using the calculation software at [burgerhout.com](http://burgerhout.com).

Application	Article number
Fits into connection piece	40 048 04 47



## HYBALANS<sup>+</sup> OVAL

### AIR VALVE CONNECTION BEND 90°

The valve connection piece is fitted with snap connectors and a fully adjustable mounting base and is supplied with dust cap and sealing ring.

Duct Ø (mm)	Air valve size Ø (mm)		Floor/wall thickness (mm)	Article number
	Internal	External		
52 x 132	125	133	265	40 048 04 42



### CONNECTION PIECE

The connection piece is fitted with snap connectors and supplied with gasket and sealing ring.

Application	Article number
To connect duct to air distribution box	40 048 04 37



### COUPLING PIECE

The coupling piece is fitted with snap connectors and supplied with two sealing rings.

Application	Article number
To extend duct	40 048 04 40



### COUPLING PIECE OVAL TO ROUND

To connect oval duct with round duct; the keyed connection can be combined with the connecting piece and the coupling piece.

Application	Article number
Transition from round to oval with keyed connection	40 048 04 44
Transition from round Ø 75 to oval with click coupling	40 048 06 15
Transition from round Ø 92 to oval with click coupling	40 048 06 14



### BEND 90° OVAL TO ROUND

Coupling oval duct with round duct using a click coupling.

Application	Article number
Bend from round Ø 75 to oval with click coupling	40 048 06 18
Bend from round Ø 92 to oval with click coupling	40 048 06 19



### SEALING RING OVAL

Application	Article number
Spare sealing ring for ducts	40 047 04 29



### DUST CAP

The dust cap prevents fouling of ducting during the construction process and the various ducts can be labelled with it.

Application	Article number
Capping duct ends	40 048 04 48



[illegible]

AIR VALVES

A **NEW** addition to the Burgerhout product range are the Hybalans+ designer valves. These valves bring a contemporary look to any home and look good in any up-to-date interior. These metal valves have a matt finish, enabling them to blend in nicely against your ceiling. Just like all our other valves, these designer valves can be selected in the Hybalans+ calculator and can be used in combination with the Hybalans+ restriction rings. These designer valves can also be used as adjustable valves.

THE BENEFITS OF DESIGNER VALVES:

- They can be used in the Hybalans+ calculator (see burgerhout.com)
- Easily resprayed in any colour to create a unique interior design
- Suitable both as a supply and an outlet valve, to create a uniform look
- Easy to keep clean and maintain
- They form an airtight seal to the valve connection and the ceiling



DESIGNER SUPPLY AND EXTRACTION AIR VALVE SQUARE

Application	Max. in-flow (m³/h)	Max. out-flow (m³/h)	Article number
Air supply through wall and ceiling	50	75	40 047 40 95



DESIGNER SUPPLY AND EXTRACTION AIR VALVE ROUND

Application	Max. in-flow (m³/h)	Max. out-flow (m³/h)	Article number
Air supply through wall and ceiling	50	75	40 047 40 96



**QUADRANT EXTRACTION AIR VALVE**

Application	Max. out-flow (m³/h)	Article number
-------------	----------------------	----------------

Air supply through wall and ceiling	75	40 047 04 15
-------------------------------------	----	--------------

**TURN EXTRACTION AIR VALVE**

Application	Max. out-flow (m³/h)	Article number
-------------	----------------------	----------------

Air supply through wall and ceiling	75	40 047 04 17
-------------------------------------	----	--------------

**CONE SUPPLY AND EXTRACTION AIR VALVE**

Application	Max. in-flow (m³/h)	Max. out-flow (m³/h)	Article number
-------------	---------------------	----------------------	----------------

Air supply through wall	50	75	40 047 04 14
-------------------------	----	----	--------------

**DISC SUPPLY AND EXTRACTION AIR VALVE**

Application	Max. in-flow (m³/h)	Max. out-flow (m³/h)	Article number
-------------	---------------------	----------------------	----------------

Air supply through ceiling	50	75	40 047 04 18
----------------------------	----	----	--------------

**WAVE SUPPLY AND EXTRACTION AIR VALVE**

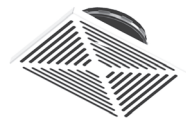
Application	Max. in-flow (m³/h)	Max. out-flow (m³/h)	Article number
-------------	---------------------	----------------------	----------------

Air supply through wall and ceiling	50	75	40 047 03 80
-------------------------------------	----	----	--------------

**MAZE SUPPLY AND EXTRACTION AIR VALVE**

Application	Max. in-flow (m³/h)	Max. out-flow (m³/h)	Article number
-------------	---------------------	----------------------	----------------

Air supply through wall and ceiling	50	75	40 047 03 86
-------------------------------------	----	----	--------------

**GRILLE FOR WALL AND FLOOR PLENUM**

Application	Article number
-------------	----------------

For wall and floor plenum	40 048 06 13
---------------------------	--------------

**FILTER**

To filter the air flowing in to or out of a room.

Application	Article number
-------------	----------------

For placement in air valves	40 048 06 11
-----------------------------	--------------



## OTHER PLENUMS AND AIR DISTRIBUTION BOXES

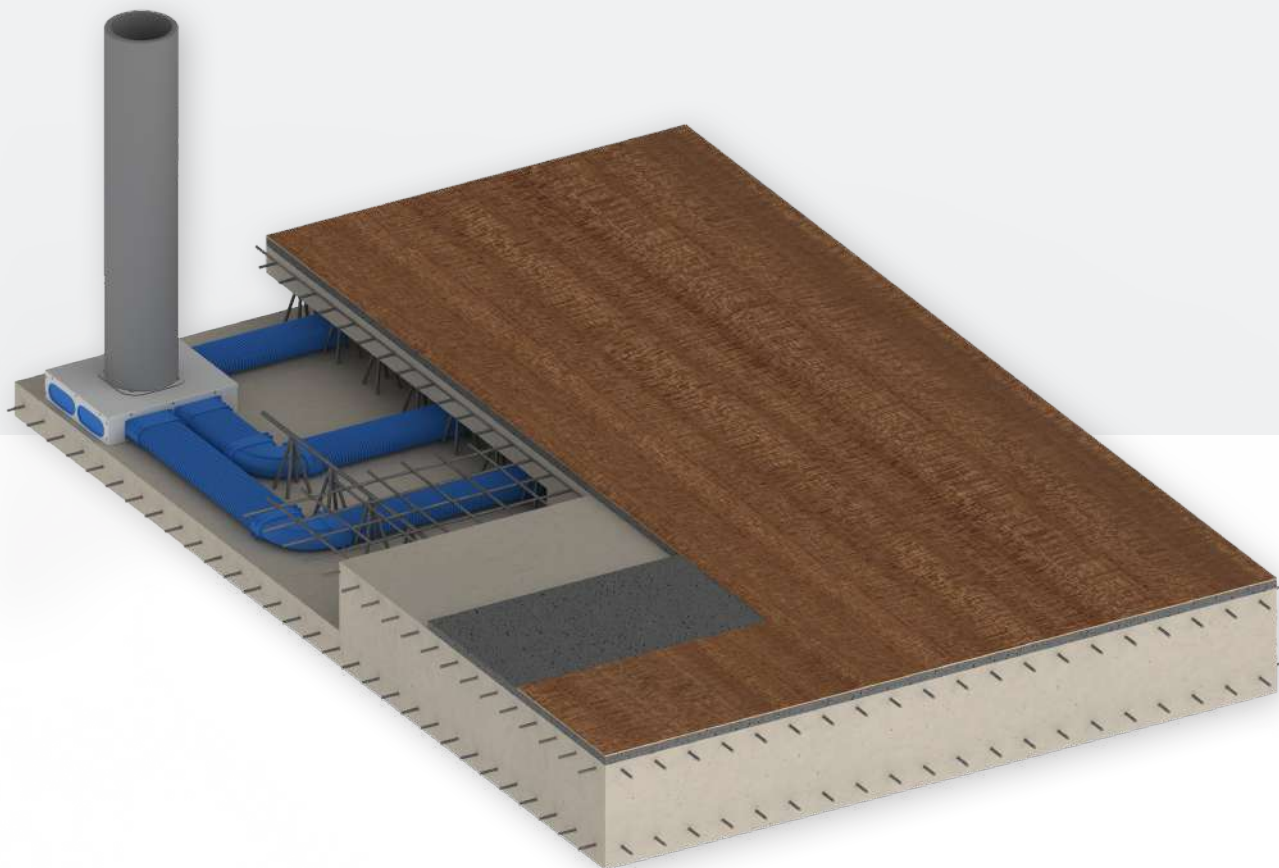
In addition to the extensive Hybalans+ air distribution system, Burgerhout has developed a series of ventilation plenums and air distribution boxes that can be used in situations where the standard plenum or air distribution box is not appropriate. For example because there is no space for it. This one wide range of products gives the designer more design freedom. These plenums and air distribution boxes can be used with all standard Hybalans+ products. The plenums are used separately from the Hybalans+ calculator and are configured manually afterwards on the standard adjustable valve.

### FLEXIBILITY IN BUILDING

This range of metal plenums and air distribution boxes come in multiple sizes and formats with a variety of connections. They are available for both round and oval ducts and for any size main duct. The main duct can be connected both at the top and at the side, for example when used above a suspended ceiling. The plenums can be made with insulating material and are always equipped with a spiro-safe connection for the insulated ducts.

### MADE TO ORDER

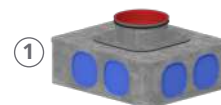
Due to the extensive range, these products are made to order for individual projects, they are not available from stock. Contact us for more information.





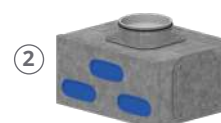
## PLENUMS TOP CONNECTION

	Dimensions L x W x H (mm)	Duct type	Maximum flow (m <sup>3</sup> /h)	Main connection Ø (mm)	Connec- tions	Type	Article number
1	320 x 300 x 112	Round	280	125	8	Non insulated	40 007 61 01
2	400 x 320 x 83	Oval	280	125	8	Non insulated	40 007 61 46



## PLENUMS TOP CONNECTION

	Dimensions L x W x H (mm)	Duct type	Maximum flow (m <sup>3</sup> /h)	Main connection Ø (mm)	Connec- tions	Type	Article number
1	402 x 311 x 198	Round	280	125	8	Non insulated	40 007 61 02
	402 x 311 x 198	Round	280	150	8	Non insulated	40 007 61 03
	402 x 311 x 198	Round	280	160	8	Non insulated	40 007 61 04
	402 x 311 x 198	Round	280	125	8	Insulated	40 007 61 05
	402 x 311 x 198	Round	280	150	8	Insulated	40 007 61 06
	402 x 311 x 198	Round	280	160	8	Insulated	40 007 61 07
2	402 x 311 x 198	Oval	280	125	9	Non insulated	40 007 61 47
	402 x 311 x 198	Oval	280	150	9	Non insulated	40 007 61 48
	402 x 311 x 198	Oval	280	160	9	Non insulated	40 007 61 49
	402 x 311 x 198	Oval	280	125	9	Insulated	40 007 61 50
	402 x 311 x 198	Oval	280	150	9	Insulated	40 007 61 51
	402 x 311 x 198	Oval	280	160	9	Insulated	40 007 61 52



## PLENUMS TOP CONNECTION

	Dimensions L x W x H (mm)	Duct type	Maximum flow (m <sup>3</sup> /h)	Main connection Ø (mm)	Connec- tions	Type	Article number
1	343 x 615 x 244	Round	450	150	18	Non insulated	40 007 61 40
	343 x 615 x 244	Round	450	160	18	Non insulated	40 007 61 41
	343 x 615 x 244	Round	450	180	18	Non insulated	40 007 61 42
	343 x 615 x 244	Round	450	150	18	Insulated	40 007 61 43
	343 x 615 x 244	Round	450	160	18	Insulated	40 007 61 44
	343 x 615 x 244	Round	450	180	18	Insulated	40 007 61 45
2	343 x 615 x 244	Oval	450	150	16	Non insulated	40 007 61 59
	343 x 615 x 244	Oval	450	160	16	Non insulated	40 007 61 60
	343 x 615 x 244	Oval	450	180	16	Non insulated	40 007 61 61
	343 x 615 x 244	Oval	450	150	16	Insulated	40 007 61 62
	343 x 615 x 244	Oval	450	160	16	Insulated	40 007 61 63
	343 x 615 x 244	Oval	450	180	16	Insulated	40 007 61 64





# VENTILATION DESIGN TOOLS

HYBALANS<sup>+</sup> CALCULATOR

BURGERHOUT VIDEOS

DATA SHEETS

BIM

INSTALLATION EXAMPLES

## CALCULATOR

The Hybalans+ air distribution system is adjusted using the restriction rings. This way, the required ventilation flow rate of each room can be adjusted from the air distribution box. Based on the ventilation requirement, you can easily make an installation plan for this using the online Hybalans+ calculator. This way you can always be sure that the entire system functions properly and that a healthy indoor climate is guaranteed.

### Benefits of calculating ventilation solutions:

- The calculator shows the restriction ring settings required to meet the needs for each space. This improves comfort, and you no longer need to adjust valves manually afterwards.
- The ventilation needs in each space are used to calculate the capacity, so you can make the right choice for a heat recovery system or ventilator.
- You can design the entire system, including heat recovery unit, vents and accessories. Both for system C and system D.
- Calculation ready? Then you will receive a calculation report listing all results and a component list including article numbers for all Burgerhout materials. You can easily order against this list, it's that easy! The restriction rings and connectors are also automatically included in the component list based on your calculation.

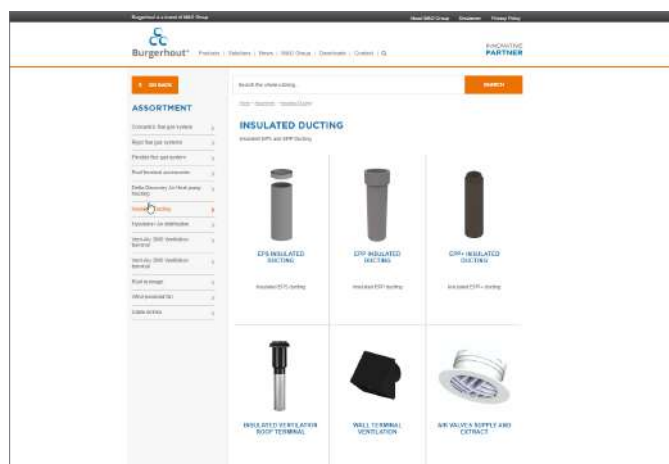
### ONLINE HYBALANS+ CALCULATOR

Burgerhout has introduced the online calculator that allows you to work on your project anytime and anywhere. The entire product portfolio is continuously updated so that you always know you have the right products. By saving all projects in your account, you always have an overview of the projects and you can download a calculation report for all projects. You can use this calculation report to order all required components from your wholesaler, after which the installer can easily configure the entire system. Guaranteed the right result based on your ventilation requirement!



### ONLINE CATALOGUE

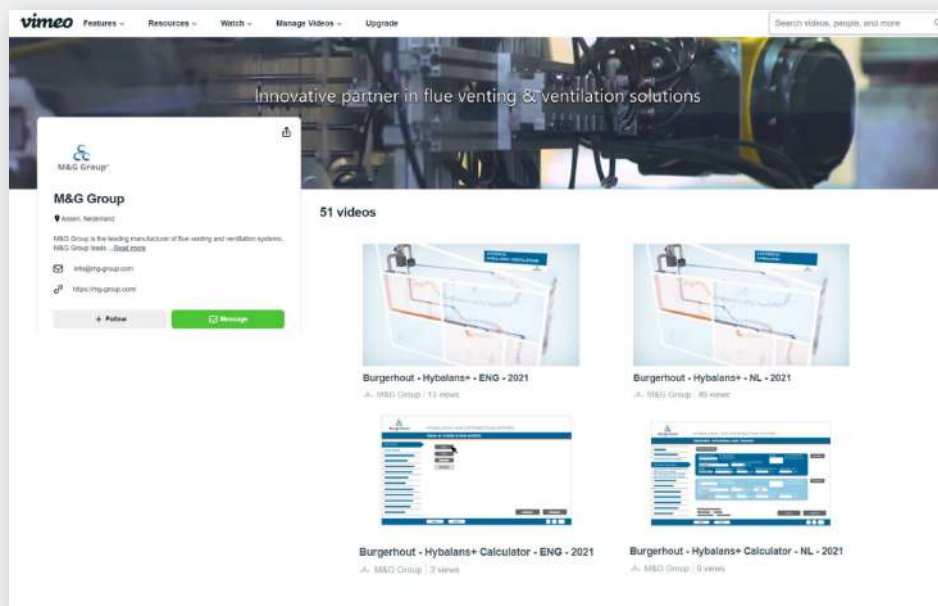
Go to [burgerhout.com](http://burgerhout.com) for the latest version of the Burgerhout online catalogue. Here you can easily and quickly find the desired products in the available versions, including sizes and specifications. In order to give you the best possible product information, each product is provided with line drawings and technical information.



# BURGERHOUT VIDEOS

## YOUTUBE/VIMEO

Check out the Burgerhout website or YouTube channel to view the latest product videos. Burgerhout also has many informative installation videos and you can stay informed about innovations through our innovation videos! [vimeo.com/burgerhout](https://vimeo.com/burgerhout)



## DATA SHEET


The Burgerhout data sheets contain all technical information about the products, including technical measurement data and product dimensions. The data sheets can be found on the Burgerhout website and in the online catalogue.

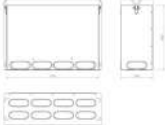
HYBALANS+

TECHNICAL DATASHEET

General information

Hybalans+ Manifold box lower part XL 350#14 132x52





Specifications

Article number	400480449
Product category	Air extraction plenum / Air distribution
Material	Aluminium
Colour	RAL 7045
Wall Thickness (mm)	26
Weight (kg)	5,16

Dimensions

Dimensions (l x w x h mm)	640 x 210 x 420
Connection diameter flexible (mm)	132x52
Connection diameter rigid (mm)	


Application Insights

Intended use	Air Supply/Extract
Supply / Extract	14
Number of connections	14
Temperature range (°C)	-25 / +80

Technical Specifications

Maximum air flow (m³/h)	350
Air Tightness Class	3
R-value (m²K/W)	0,86
Other specifications	-

burgerhout.com



Burgerhout  
a brand of M&G Group


Version M&G-DS-400480449-2021-10 - Specifications may be subject to change without notice.


VENTILATION

TECHNICAL DATASHEET

General information

Roof terminal Ventilation Isolated 160 L\*1000 Black





Specifications

Article number	400480600
Product category	Ventilation terminals
Material	Aluminium/GPS
Colour	RAL-9005
Weight (kg)	4,9

Dimensions

Diameter inside (mm)	171
Diameter outside (mm)	200
Dimensions (l x w x h mm)	1000 x 300 x 300


Application Insights

Intended use	Ventilation
Supply / Extract	Supply/Extract
Temperature range (°C)	-25 / +80

Technical Specifications

Resistant to ice/rain	Yes
Maximum air flow (m³/h)	425
Extract	0,42
Supply	2,27
Thermal conductivity (W/m·K)	0,032
R-value (m²K/W)	0,38
Other specifications	-

burgerhout.com



Burgerhout

a brand of M&G Group

Version M&G-D5-400480600-3221-10 - Specifications are subject to change without notice.

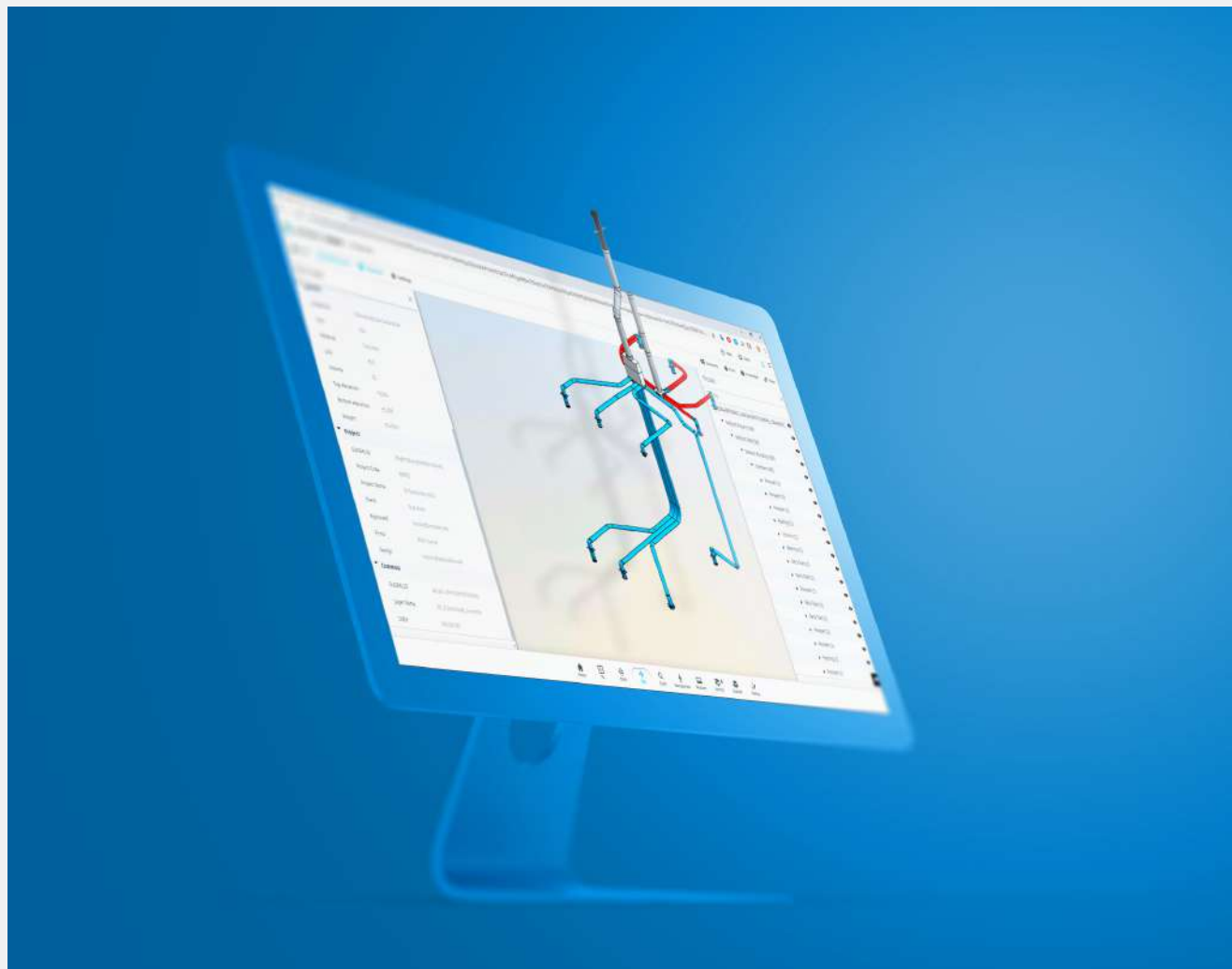
## BIM

Download our BIM (Building Information Model) library for flue gas and ventilation via [burgerhout.com](http://burgerhout.com). These are complete libraries that make it easy to apply our products in any construction project.

Burgerhout's Revit libraries are of BIM level LOD 400. Uneto/VNI and Ketenstandaard (ETIM-RT project) have also been implemented. The technical development is minimally based on the Dutch Revit Standards version 2.5.2. IFC has been implemented with IFC2.3X classification including class properties, making it fully IFC4 compatible.

Burgerhout BIM products are modelled for functional use in a BIM process. This also means that the geometry is not modelled in detail, just the positioning geometry, typical external characteristics (simplified) and relevant connection

and attachment points. Non-relevant product design and detailing or certain features may have been left out to be able to use the products pragmatically and without overly heavy loads. Some examples here would be material rounding, screws, internal geometry and perforations, etc. Burgerhout has developed what it believes is a highly useable Revit library. Despite the utmost of care taken in its development, imperfections cannot be ruled out, for which Burgerhout is not responsible. Burgerhout does not accept any liability in this regard. Some examples here would be typos in names or article codes, colour/material or deviating dimensions. In cases of variable article lengths, it is possible, practically speaking, that you may enter an impossible dimension. If this occurs, the system will automatically display an article number error.



## INSTALLATION EXAMPLES



CONCRETE HOLLOW



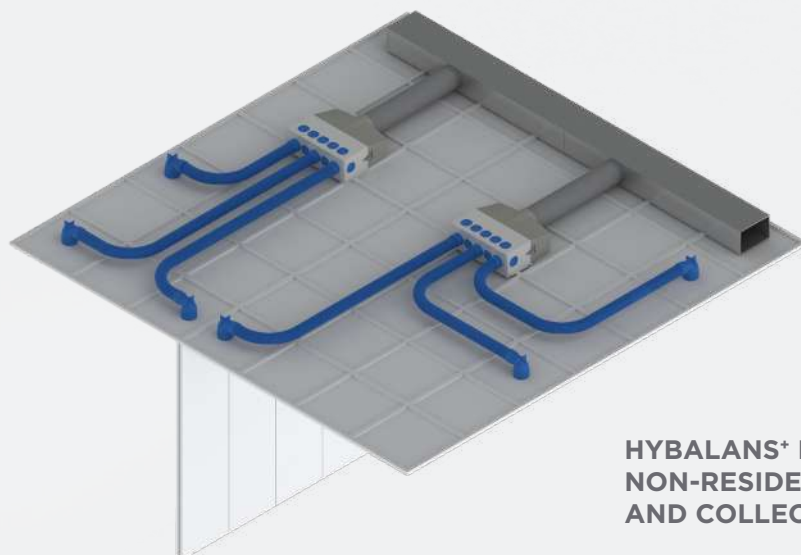
CAST-IN-SITU FLOOR



WIDE SLAB FLOOR



CEMENT FLOOR SUSPENDED  
CEILING WALL SYSTEM



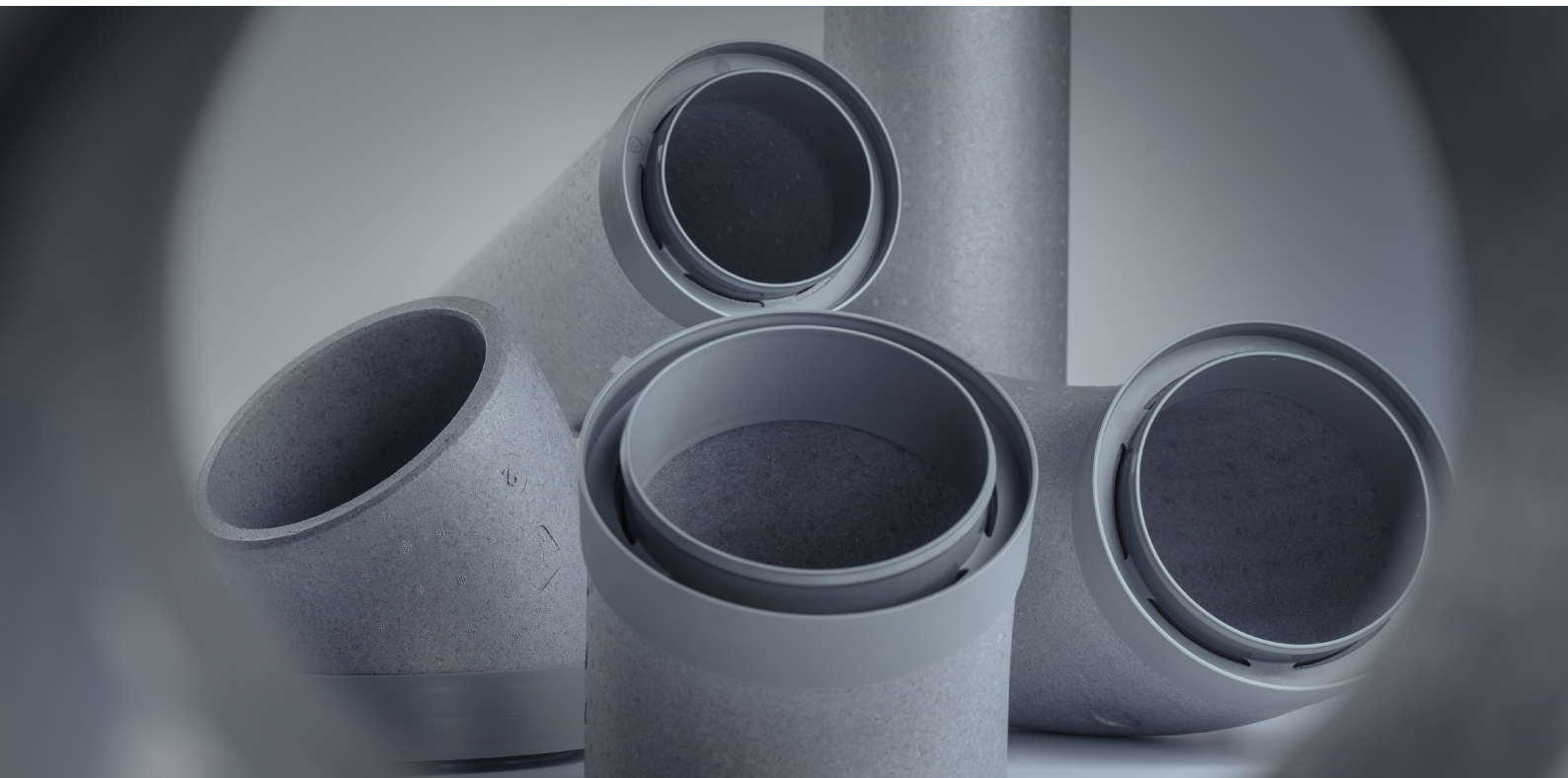
HYBALANS+ FOR  
NON-RESIDENTIAL CONSTRUCTION  
AND COLLECTIVE SYSTEMS

## NOTES

[illegible]







**Innovative partner** in flue venting & ventilation solutions